

SignalTrader

Setup & Installation Guide

Everything you need to install and configure SignalTrader on your Windows PC or Windows VPS, connect IB Gateway, set up Mobile Access, and start receiving automated SPX trading signals.

Version	Platform Support	Support
1.1.0 — April 2026	Windows 10/11 & Server 2019+	@ASG_SPX on Telegram

www.asgspexusfarms.com

Table of Contents

1. System Requirements
 2. Download the Software
 3. Install IB Gateway
 4. Install SignalTrader Client
 5. Configure IB Gateway for API Access
 6. Remove API Trading Restrictions in IB Gateway
 7. Launch and Connect SignalTrader
 8. Windows Firewall Configuration
 9. Antivirus Exclusions
 10. VPS-Specific Setup (Windows Server)
 11. Auto-Start on Boot
 - 12. Mobile Access — Control SignalTrader from your iPhone (NEW)**
 13. Troubleshooting Common Issues
 14. Getting Support
- Appendix A: SignalTrader UI Tour

1. System Requirements

Before you begin, make sure your system meets these requirements:

Requirement	Minimum	Recommended
Operating System	Windows 10 (64-bit)	Windows 11 or Server 2022
RAM	4 GB	8 GB
Disk Space	500 MB free	1 GB free
Internet	Stable broadband	Low-latency connection
Account	Interactive Brokers account	Funded IB account with API access

TIP: SignalTrader works on both regular Windows PCs and Windows VPS. If you plan to run it 24/7, a VPS is recommended.

2. Download the Software

Visit the download page to get all required files:

www.asgspexusfarms.com/downloads/

You need to download:

- **SignalTrader Client** (SignalTrader_Setup_v1.1.0.exe) — the main trading application
- **IB Gateway** — the API bridge to your Interactive Brokers account
- **This PDF guide** — for reference during setup

Verify Your Download

To confirm the installer was not tampered with, open Command Prompt and run:

```
certutil -hashfile SignalTrader_Setup_v1.1.0.exe SHA256
```

Compare the output with the SHA-256 hash shown on the download page.

WARNING: If your browser or antivirus blocks the download, see Section 9 (Antivirus Exclusions).

3. Install IB Gateway

IMPORTANT: IB Gateway must be installed and running BEFORE you use SignalTrader.

STEP 01 — Run the IB Gateway Installer

Double-click the IB Gateway installer (IBGateway_Stable.exe). If SmartScreen appears, click **More info** then **Run anyway**.

STEP 02 — Follow the Setup Wizard

Click **Next** through the wizard. Accept defaults. Click **Install** then **Finish**.

STEP 03 — Launch IB Gateway

Double-click the IB Gateway icon on your desktop. On the login screen:

- Select **"IB API"** as the API Type (not "FIX CTCL")
- Choose **Live Trading** or **Paper Trading** mode
- Enter your Interactive Brokers **username** and **password**
- Click **"Log In"**

STEP 04 — Verify Connection

You should see a green status indicating you are connected. The Connection Status window shows the IB API Server as 'connected'. Keep this window open.

IMPORTANT: IB Gateway must be running whenever you use SignalTrader. If you close it, SignalTrader loses its broker connection.

4. Install SignalTrader Client

STEP 01 — Extract or Run the Installer

Extract the SignalTrader.zip file. You will see the SignalTrader.exe application and an _internal folder.

STEP 02 — Handle SmartScreen (if it appears)

Windows may show a blue popup saying "Windows protected your PC". This is normal.

- Click "**More info**"
- Click "**Run anyway**"

STEP 03 — Follow the Setup Wizard

- Accept the default install location (C:\Program Files\SignalTrader)
- Check **Create a desktop shortcut**
- Check **Start SignalTrader on Windows startup** if on VPS
- Click **Install**

VPS Silent Installation (No GUI)

```
SignalTrader_Setup_v1.1.0.exe /VERYSILENT /SUPPRESSMSGBOXES
```

5. Configure IB Gateway for API Access

SignalTrader communicates with IB Gateway through its API. You need to enable API connections.

STEP 01 — Open IB Gateway Configuration

In IB Gateway, click the **Configure** menu at the top, then select **Settings**.

In the left panel, expand **API** to see Settings, Precautions, and News Configuration.

STEP 02 — Enable API Settings

Click on **API > Settings** and configure these settings exactly as shown:

Setting	Value	Why
Enable ActiveX and Socket Clients	Checked	Required for API connection
Socket Port	4001 (live) or 4002 (paper)	Must match SignalTrader config
Allow connections from localhost only	Checked	Security — only local apps connect
Read-Only API	UNCHECKED	SignalTrader must place orders

STEP 03 — Apply and Restart

Click **Apply** then **OK**. Restart IB Gateway for changes to take effect.

WARNING: If Read-Only API is checked, SignalTrader can see data but CANNOT place trades. Make sure it is unchecked.

6. Remove API Trading Restrictions in IB Gateway

By default, IB Gateway has several safety restrictions that will block automated trading. You must disable these for SignalTrader to work properly.

6.1 — Disable API Order Confirmation Popups

By default, IB Gateway shows a confirmation dialog for every order placed via API. This blocks automated trading.

STEP 01 — Open API Precautions

In IB Gateway: **Configure** (gear icon) > **Settings** > **API** > **Precautions**

STEP 02 — Enable ALL Bypass Options

Check every bypass option in this section:

- **Bypass Order Precautions for API Orders** — Check this ON (master override)
- **Bypass Bond warning** — Check ON
- **Bypass negative yield to worst confirmation** — Check ON
- **Bypass price-based volatility risk warning** — Check ON
- **Bypass Redirect Order warning** — Check ON
- All other bypass options — Check ON

IMPORTANT: If you skip this step, every order will hang waiting for manual confirmation and your trades will NOT execute.

6.2 — Configure Auto-Restart (Recommended)

Go to **Configuration** > **Lock and Exit** to set the auto-restart timer. This ensures IB Gateway stays running.

6.3 — Verify API Permissions on IBKR Account

Some restrictions are set at the account level. Log in to your IBKR account online:

- Navigate to **Settings** > **Account Settings** > **Trading Permissions**
- Enable permissions for **United States** — **Stocks, Options** (for SPX)
- Navigate to **Settings** > **API Settings** and enable **API Trading**

6.4 — Quick Verification Checklist

Setting	Where	Required Value
Read-Only API	IB Gateway > API > Settings	UNCHECKED
ActiveX and Socket Clients	IB Gateway > API > Settings	CHECKED

Setting	Where	Required Value
Socket Port	IB Gateway > API > Settings	4001 (live) / 4002 (paper)
Bypass Order Precautions	IB Gateway > API > Precautions	CHECKED (bypass ON)
API Trading	IBKR Account > API Settings	ENABLED
US Options Permissions	IBKR Account > Trading Permissions	ENABLED

7. Launch and Connect SignalTrader

STEP 01 — Ensure IB Gateway is Running

Make sure IB Gateway is open and logged in with green connection status.

STEP 02 — Launch SignalTrader

Double-click the SignalTrader shortcut on your desktop. You will first see the **Risk Disclaimer**. Read carefully, check the acceptance box, and click **I Accept — Continue**.

STEP 03 — Complete the 4-Step Setup Wizard

Step 1 of 4 — Activate Your License: Enter the activation code you received for ASG SPX Private Signal Service. Click **Activate**.

Step 2 of 4 — IB Gateway / TWS Connection: Configure your broker connection. Select **Paper Trading (recommended)** to start. Port will auto-detect. Client ID defaults to 10.

Step 3 of 4 — Default Trade Settings: Configure contracts per signal, take profit %, stop loss, dynamic TP, max open positions, max daily trades, and timezone.

Step 4 of 4 — Setup Complete: Your SignalTrader client is configured and ready to go. Click **Finish**.

STEP 04 — Verify Connections

Once connected, SignalTrader should show:

- **Server: Connected** — green indicator (ASG signal server)
- **IB: Connected** — green indicator (your broker)
- Your account information, positions, and today's P&L data

***TIP:** If either connection shows red/disconnected, check the Troubleshooting section (Section 13).*

8. Windows Firewall Configuration

The installer automatically adds firewall rules. If you have connection issues, add them manually:

Check Existing Rules:

```
netsh advfirewall firewall show rule name="SignalTrader"
```

Add Rules Manually (If Missing):

```
netsh advfirewall firewall add rule name="SignalTrader" dir=in action=allow  
program="C:\Program Files\SignalTrader\SignalTrader.exe" enable=yes profile=any netsh  
advfirewall firewall add rule name="SignalTrader Out" dir=out action=allow  
program="C:\Program Files\SignalTrader\SignalTrader.exe" enable=yes profile=any
```

TIP: On Windows Server (VPS), firewalls are stricter. Always verify both inbound and outbound rules.

9. Antivirus Exclusions

Some antivirus may flag SignalTrader as suspicious. This is a false positive.

Windows Defender:

- Open **Windows Security > Virus & threat protection**
- Click **Manage settings**
- Scroll to **Exclusions > Add or remove exclusions**
- Add folder: C:\Program Files\SignalTrader\

If Installer Was Blocked:

- **Windows Security > Virus & threat protection > Protection history**
- Find the blocked file > **Actions > Allow on device**

10. VPS-Specific Setup (Windows Server)

Setting	Desktop Windows	Windows Server
VC++ Runtime	Usually installed	Often MISSING
Windows Defender	Enabled	May be disabled
IE Security	Normal	Enhanced (blocks downloads)
Firewall	Standard	Stricter defaults

If the browser is blocked on VPS, use PowerShell to download:

```
Invoke-WebRequest -Uri  
"https://www.asgspexusfarms.com/downloads/SignalTrader_Setup_v1.1.0.exe" -OutFile  
"$env:USERPROFILE\Desktop\SignalTrader_Setup.exe"
```

11. Auto-Start on Boot

Option A: Installer Checkbox (Simplest)

During installation, check "Start SignalTrader automatically when Windows starts".

Option B: Task Scheduler (More Reliable for VPS)

```
schtasks /create /tn "SignalTrader" /tr "\"C:\Program  
Files\SignalTrader\SignalTrader.exe\"" ` /sc onlogon /rl highest /f
```

WARNING: IB Gateway also needs to be running. Set up auto-start for IB Gateway too.

12. Mobile Access — Control SignalTrader from your iPhone

Mobile Access lets you monitor positions, edit TP/SL, and close trades from your iPhone — from anywhere. It uses **Tailscale**, a free secure tunnel that connects your iPhone directly to your PC or VPS without exposing anything to the public internet. Setup takes about 5 minutes.

IMPORTANT: Mobile Access is a remote control for the SignalTrader app running on your PC/VPS. The PC and IB Gateway must still be running for trades to execute — your iPhone is the dashboard, not the engine.

12.1 — What You Will Set Up

There are four pieces, and the Mobile Access dialog tracks each one with a green checkbox:

- **Tailscale installed on this PC** — the tunnel software on your trading machine
- **Tailscale connected** — signed in to your free Tailscale account
- **Mobile server running** — SignalTrader's built-in web server, started with one click
- **Ready — scan QR with iPhone** — the QR code appears, you point your camera at it

12.2 — Open the Mobile Access Dialog

In SignalTrader, click **Tools > Mobile Access**. The setup dialog opens with the 4-step checklist. All four boxes will be empty on first launch.

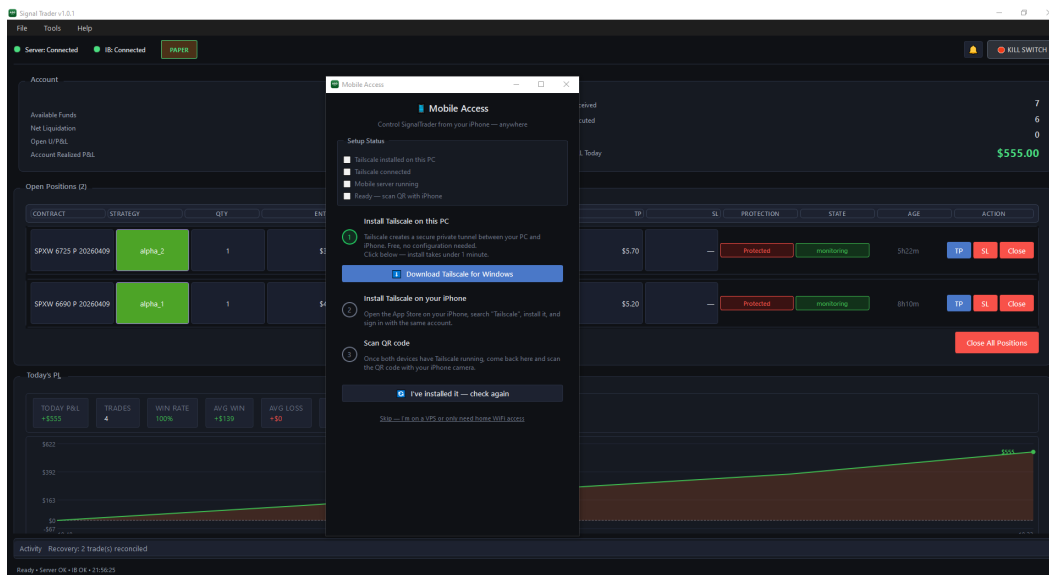


Figure 12.1 — Mobile Access dialog on first launch. All four setup steps are unchecked. The dialog walks you through each one in order.

TIP: If you only need to access SignalTrader from your iPhone on the same WiFi network as the PC, click "Skip — I'm on a VPS or only need home WiFi access" at the bottom of the dialog. You can use the local IP address instead of Tailscale.

12.3 — Install Tailscale on Your PC

STEP 01 — Open the Tailscale Download Page

In the Mobile Access dialog, click **Download Tailscale for Windows**. Your browser opens to the official Tailscale download page.

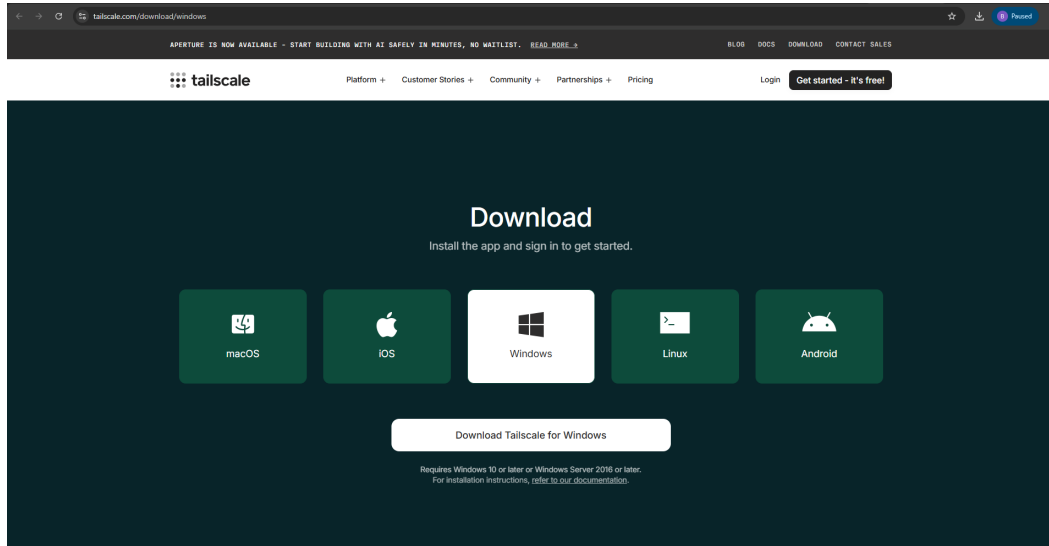


Figure 12.2 — Tailscale download page. Click 'Download Tailscale for Windows'. Tailscale is free for personal use and supports Windows 10 or later.

STEP 02 — Run the Tailscale Installer

Open the downloaded installer. Check **I agree to the license terms and conditions**, then click **Install**.

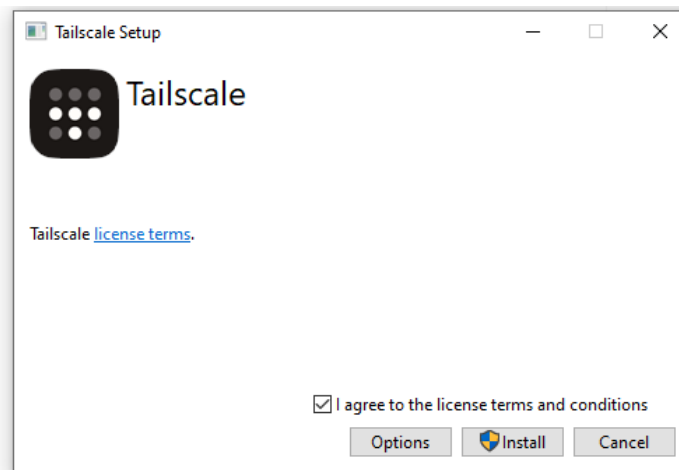


Figure 12.3 — Tailscale Setup: accept the license terms and click Install.

The installer creates a system restore point and copies files. This usually takes under a minute.

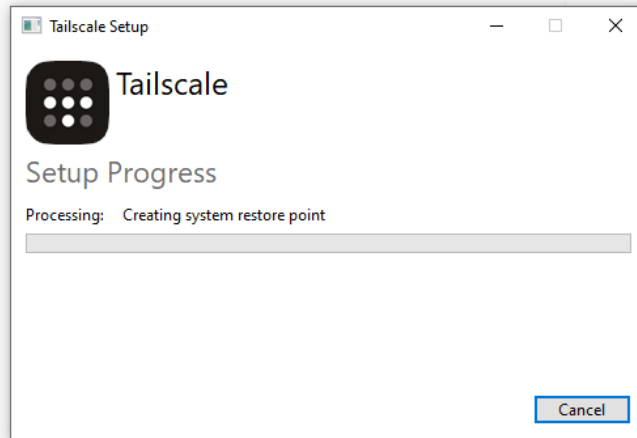


Figure 12.4 — Tailscale Setup Progress. Wait for the installation to complete.

When you see **Installation Successfully Completed**, click **Close**.

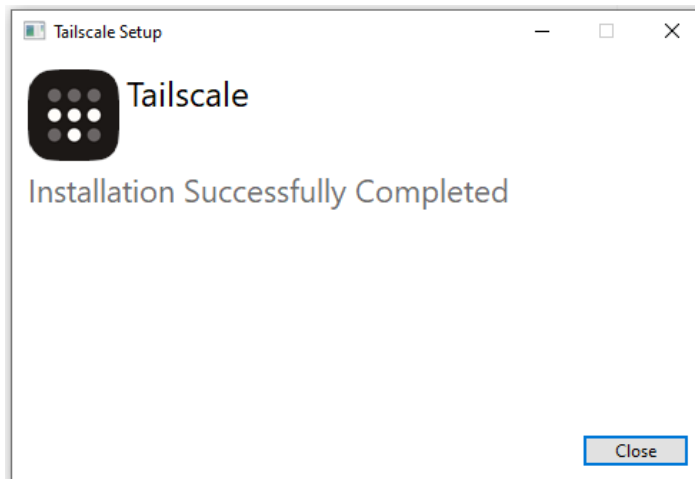


Figure 12.5 — Installation complete. Click Close to exit the installer.

12.4 — Sign In to Tailscale

Tailscale launches automatically after installation. You will see the welcome screen.

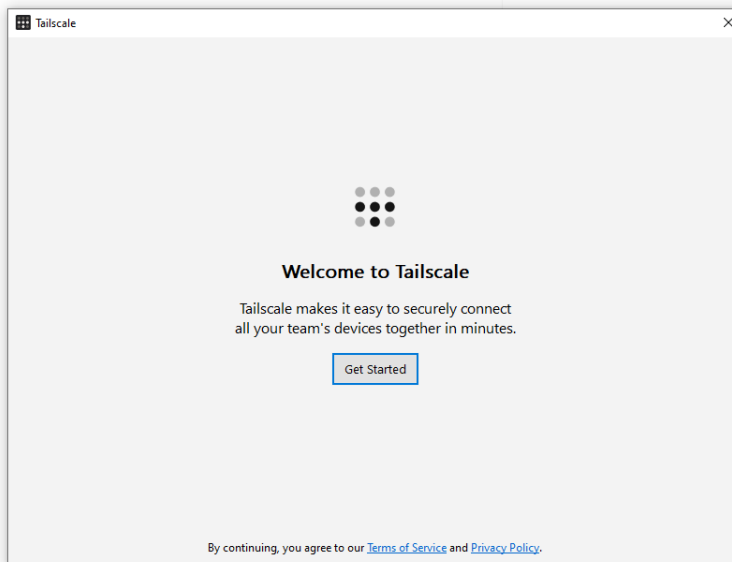


Figure 12.6 — Welcome to Tailscale. Click Get Started to begin.

STEP 01 — Join Your Network

Click **Sign in to your network**. If you don't have a Tailscale account yet, click **Sign up**.

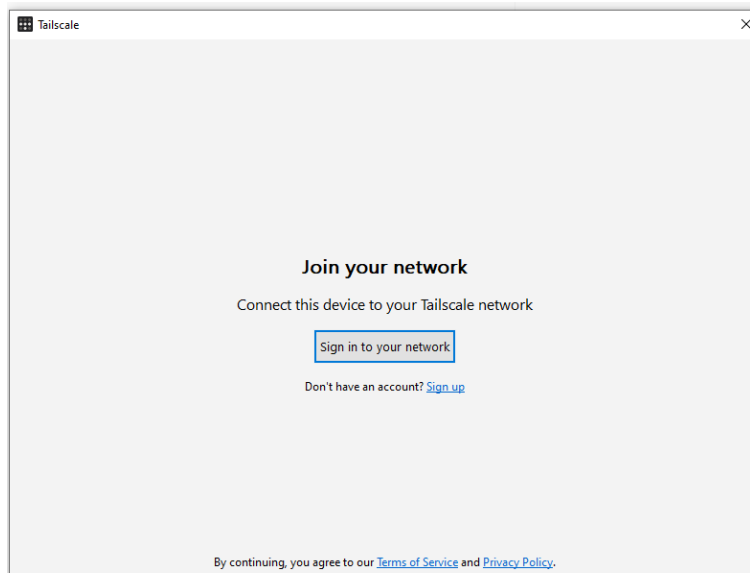


Figure 12.7 — Join your network. Sign in (or sign up) to connect this PC to your Tailscale account.

STEP 02 — Choose an Identity Provider

Your browser opens to Tailscale's sign-up page. Choose any identity provider you already use — Google, Microsoft, GitHub, Apple, or OIDC. There is no separate Tailscale password to remember.

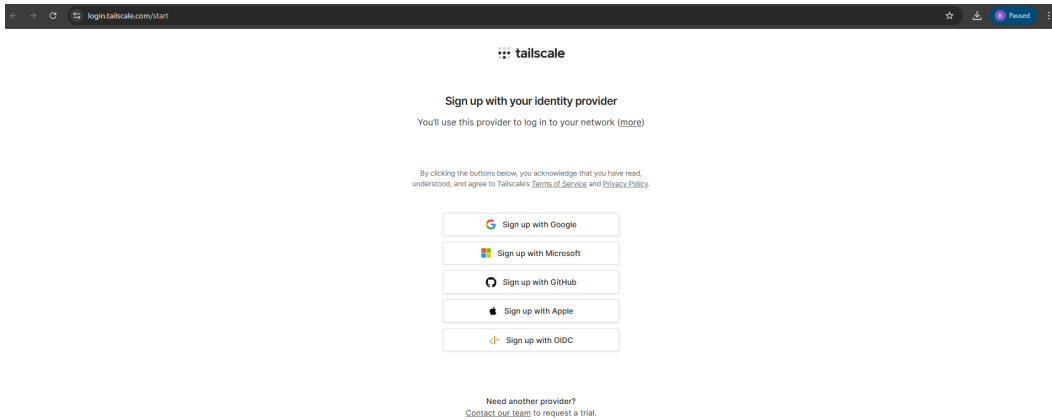


Figure 12.8 — Sign up with your identity provider. Use the same account on both PC and iPhone so they appear on the same private network.

IMPORTANT: Use the SAME identity provider account on both your PC and your iPhone. If the accounts don't match, the two devices won't see each other on the Tailscale network.

STEP 03 — Grant Permission and Complete Onboarding

Approve the permission prompt from your identity provider. Tailscale only reads your profile to identify your account.

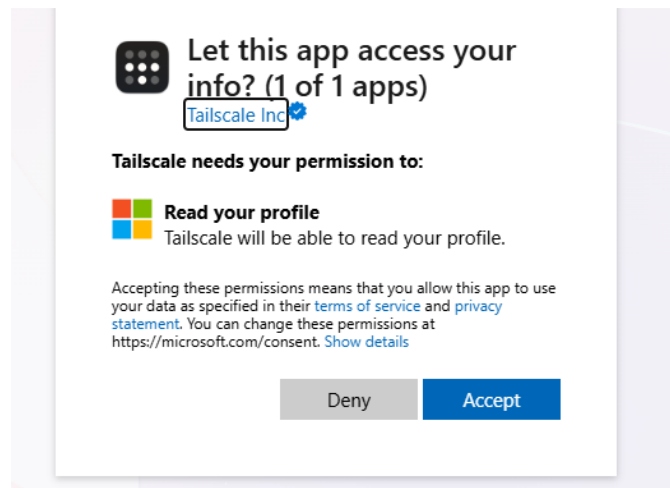


Figure 12.9 — Identity provider permission prompt. Click Accept to let Tailscale read your profile.

Tailscale shows a brief onboarding survey. Pick **Personal or At-Home Use**, choose any role, select "**I don't use a VPN**" (unless you do), then click **Next: Add your first device**.

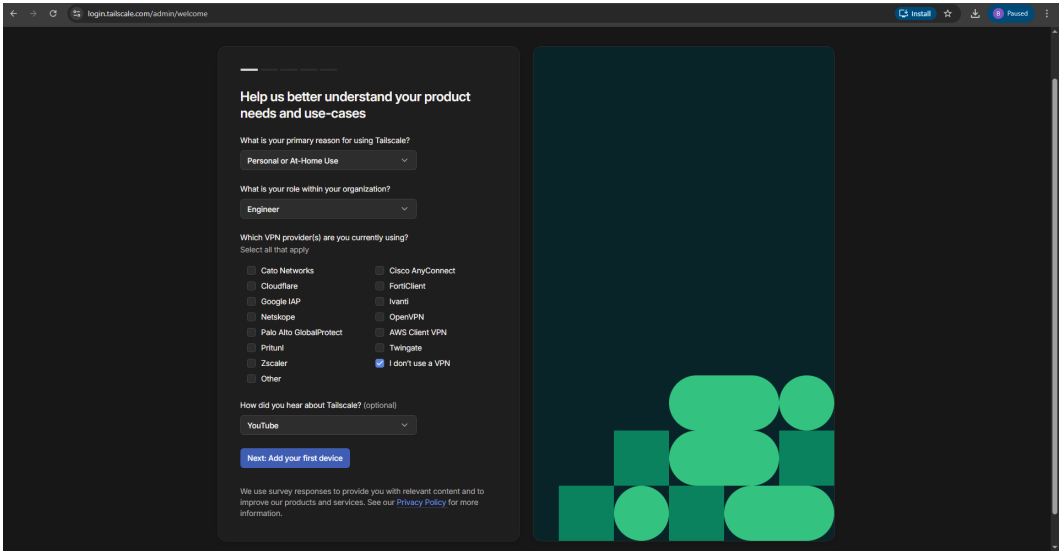


Figure 12.10 — Tailscale onboarding survey. Select Personal or At-Home Use, then continue.

On the "Let's add your first device" page, you can ignore the device-add UI in the browser — the Tailscale app on your PC will automatically register itself once you sign in.

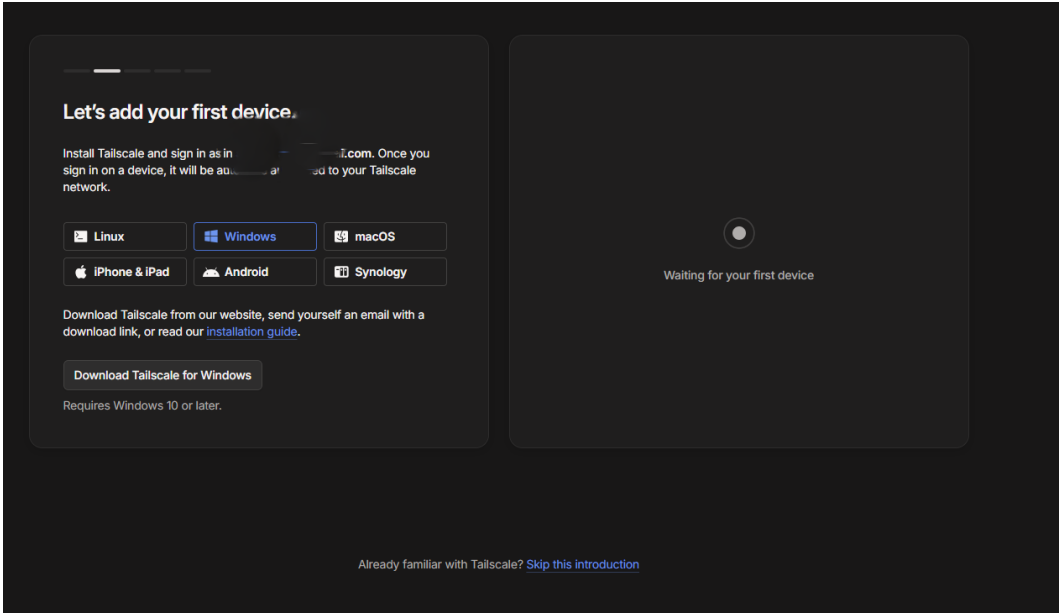


Figure 12.11 — 'Let's add your first device' page. The PC will auto-register; you don't need to do anything here. You'll add the iPhone in step 12.5.

STEP 04 — Confirm the PC is Connected

Return to the Tailscale app window and click **Sign in to your network** if prompted. Within a few seconds Tailscale assigns this PC a private address (looks like 100.x.x.x).

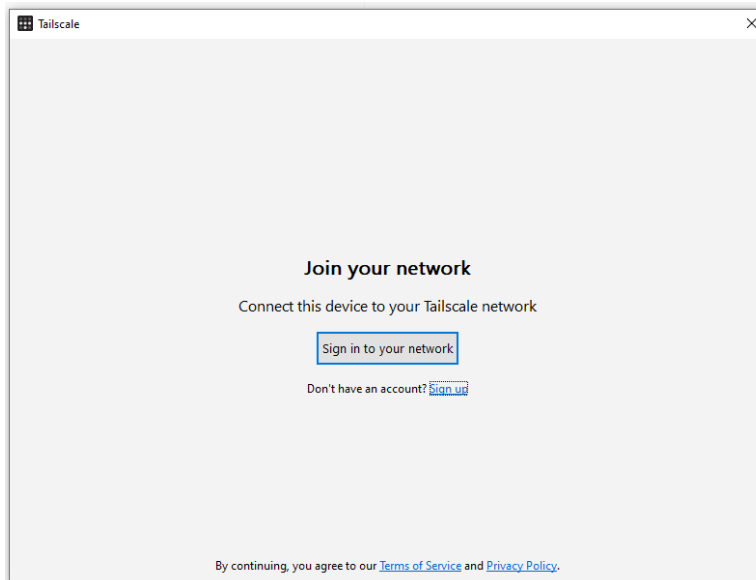


Figure 12.12 — Tailscale 'Join your network' window. Click 'Sign in to your network' to complete the connection on this PC.

12.5 — Install Tailscale on Your iPhone

Open the **App Store** on your iPhone, search for **Tailscale**, and install the official app from Tailscale Inc. Open it and sign in with the **same identity provider account** you used on the PC.

When prompted, allow Tailscale to add a VPN configuration — this is required for the secure tunnel and does not route your normal internet traffic through Tailscale; it only enables direct device-to-device connections.

***TIP:** After signing in on your iPhone, both devices appear on your Tailscale network. You can leave the iPhone Tailscale app in the background — it stays connected automatically.*

12.6 — Start the Mobile Server

Return to SignalTrader. The Mobile Access dialog now shows the first checkbox green: **Tailscale installed on this PC**. Click **Open Tailscale** if Tailscale is not yet connected, otherwise click **Check connection**.

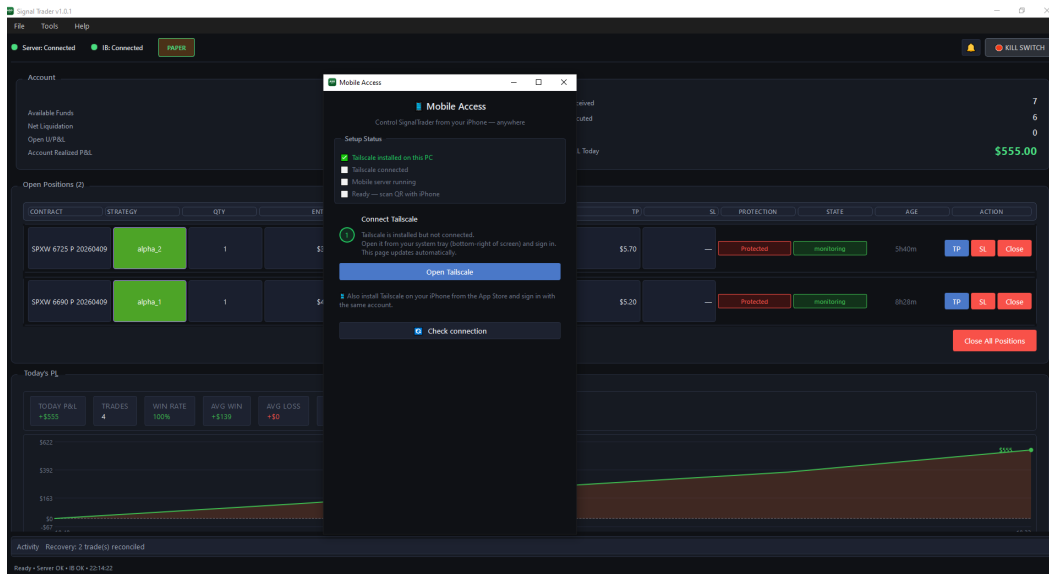


Figure 12.13 — Mobile Access after Tailscale installation. Click 'Open Tailscale' or 'Check connection' so SignalTrader can verify the tunnel.

STEP 01 — Verify the Tunnel is Connected

Once Tailscale is signed in, the second checkbox turns green: **Tailscale connected**, with your PC's Tailscale address shown next to it. The dialog now reveals the **Start Server** button.

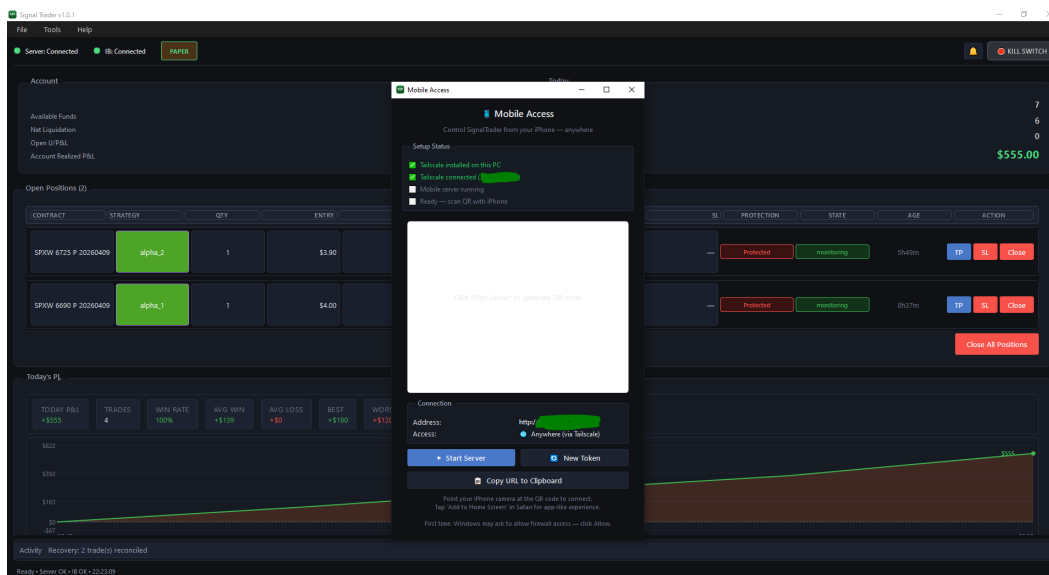


Figure 12.14 — Two checkboxes are green: Tailscale installed and connected. The QR area is empty until you click 'Start Server' to launch the mobile web server.

STEP 02 — Click Start Server

Click **Start Server**. SignalTrader launches its built-in web server. The first time you do this, Windows Defender Firewall asks for permission.

Check both Private networks AND Public networks, then click **Allow access**. Both are needed so the server is reachable from your iPhone whether it's on home WiFi or out on cellular.

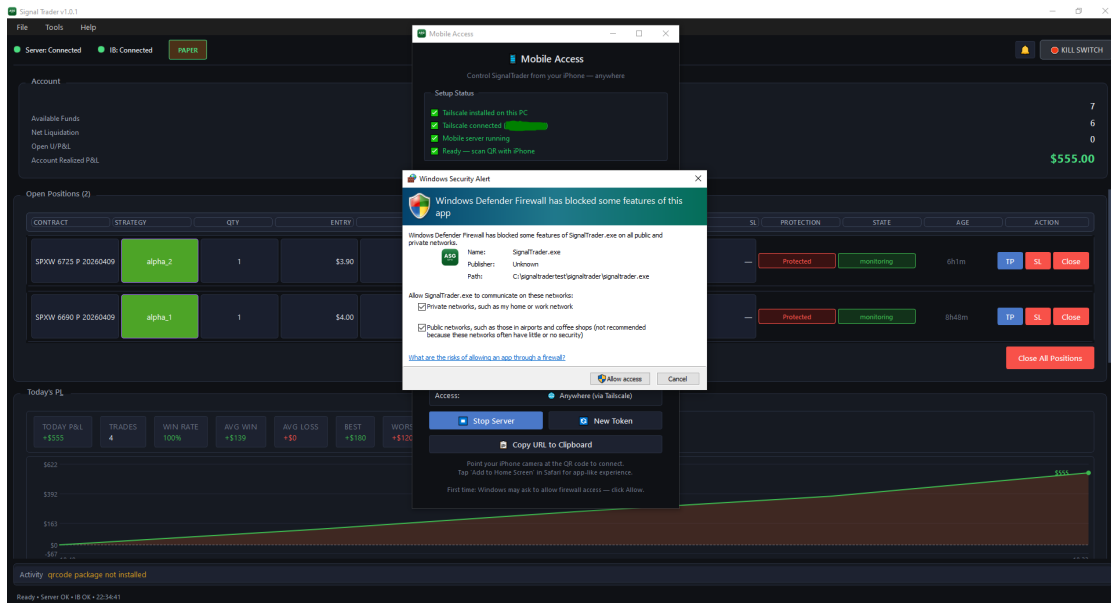


Figure 12.15 — Windows Defender Firewall prompt. Check both Private and Public networks, then click 'Allow access'. This appears only the first time you start the server.

12.7 — Scan the QR Code from Your iPhone

All four checkboxes are now green, and a large QR code appears in the dialog. The connection details show the address (`http://100.x.x.x:port`) and access mode (**Anywhere via Tailscale**).

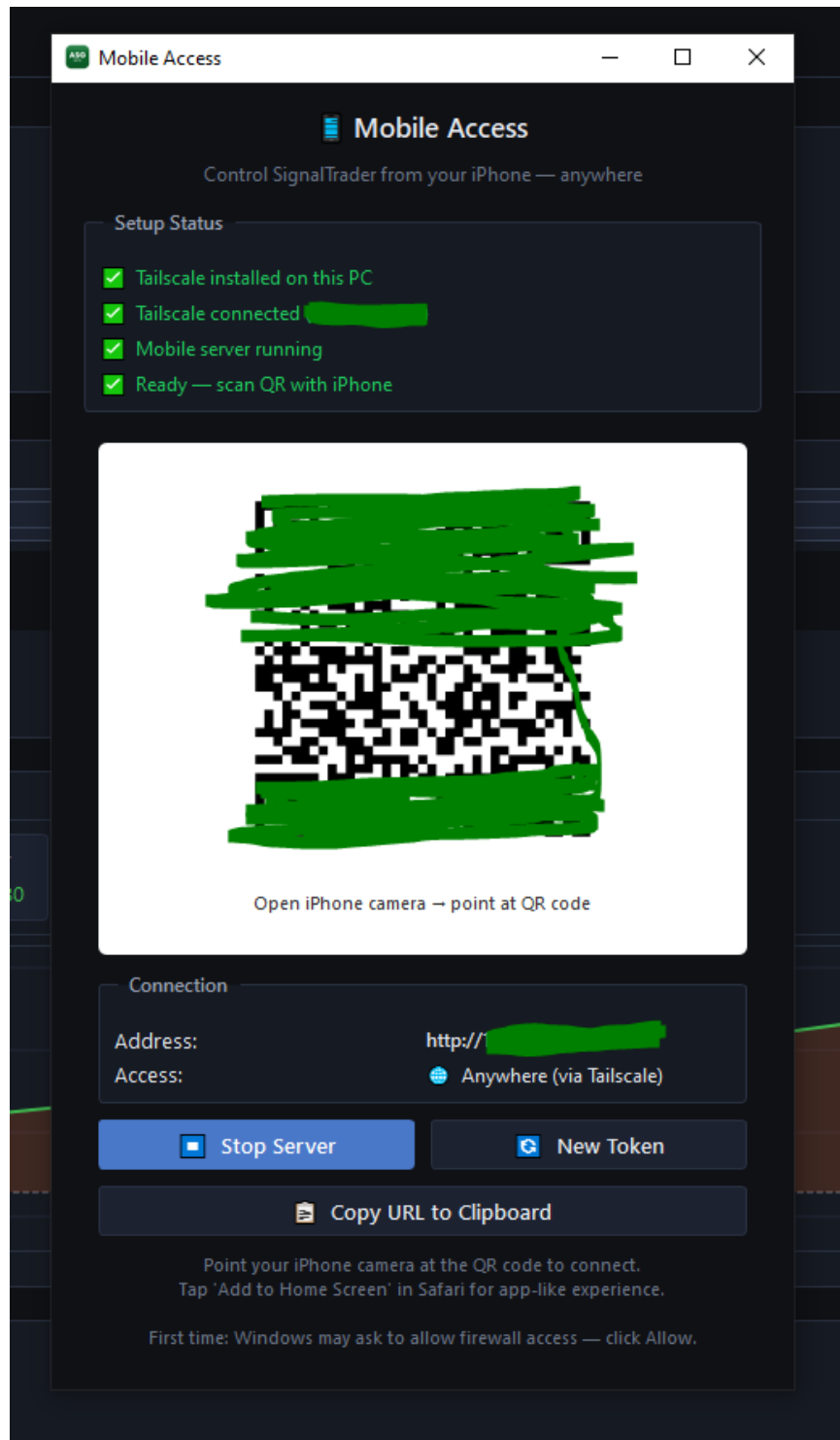


Figure 12.16 — Mobile Access fully ready. All four steps green, QR code displayed. Open the iPhone camera and point at the QR code to connect.

STEP 01 — Open Your iPhone Camera

Open the native Camera app on your iPhone and point it at the QR code on your PC screen. A notification banner appears at the top — tap it to open the SignalTrader mobile dashboard in Safari.

STEP 02 — Add to Home Screen (Recommended)

Once the dashboard loads in Safari, tap the **Share** icon, then **Add to Home Screen**. This gives you an app-like icon on your iPhone that launches SignalTrader full-screen, without Safari's address bar.

STEP 03 — Trade from Anywhere

From the iPhone dashboard you can: view open positions and live P&L, edit TP/SL on any position, close individual positions or all at once, see today's signals and closed trades, and trigger the kill switch.

***TIP:** If your iPhone shows 'Cannot connect to server', verify: (1) the Mobile Access dialog still shows all four green checks, (2) the Tailscale app on your iPhone is connected (green indicator), (3) the PC has not gone to sleep.*

12.8 — Day-to-Day Use

- **Server stays running across SignalTrader sessions** — once started, it auto-resumes when you reopen the app.
- **Stop the server** at any time by clicking **Stop Server** in the Mobile Access dialog.
- **Rotate the access token** by clicking **New Token** — this generates a fresh QR code and invalidates old links.
- **Copy the URL** with **Copy URL to Clipboard** if you'd rather paste it manually instead of scanning.

12.9 — Mobile Access Troubleshooting

Tailscale shows installed but not connected:

- Open Tailscale from your system tray (bottom-right of screen) and click **Sign in**.
- Make sure the same account is signed in on both PC and iPhone.

Activity bar shows "qrcode package not installed":

- Reinstall SignalTrader using the latest installer (v1.1.0 or higher) — earlier builds did not bundle the QR library.

iPhone scans the QR but Safari shows 'Cannot connect':

- Confirm the iPhone Tailscale app is connected (green dot in the iOS app).
- Check the firewall allowed SignalTrader.exe (re-run the prompt by clicking Stop then Start Server).
- Make sure the PC is not asleep — Mobile Access requires the PC to be awake and SignalTrader running.

Works on home WiFi but not on cellular:

- This means Tailscale isn't actually connecting. Open the iPhone Tailscale app and verify the green status.
- If you clicked "Skip" earlier and used a local IP, redo setup using Tailscale for "Anywhere" access.

13. Troubleshooting Common Issues

App crashes or closes immediately

Check the log file at: %APPDATA%\SignalTrader\logs\

"VCRUNTIME140.dll not found" error

Download from: https://aka.ms/vs/17/release/vc_redist.x64.exe — Install and restart.

Cannot connect to backend server

- Check internet connection
- Verify firewall rules (Section 8)
- Check antivirus exclusions (Section 9)

Cannot connect to IB Gateway

- Make sure IB Gateway is running and logged in
- Verify API port matches (4001 live / 4002 paper)
- "Enable ActiveX and Socket Clients" must be checked
- "Read-Only API" must be UNCHECKED
- Check that API Precautions are bypassed (Section 6)

Orders not executing / hanging

- Most common cause: API Precautions are still enabled (Section 6.1)
- Check that "Bypass Order Precautions for API Orders" is ON
- Verify trading permissions in your IBKR account (Section 6.3)
- Make sure you have sufficient buying power / margin

Mobile Access issues

- See Section 12.9 for Mobile Access troubleshooting

14. Getting Support

Channel	Details
Telegram Support	@ASG_SPX — message directly for help
Download Page	www.asgspxusfarms.com/downloads/
Log Files	%APPDATA%\SignalTrader\logs\

When contacting support, please include:

- Your Windows version
- Whether you are on a PC or VPS
- Whether you are using Mobile Access (and which step is failing)
- The log file from %APPDATA%\SignalTrader\logs\
- A screenshot of any error message

Appendix A: SignalTrader UI Tour

The desktop SignalTrader interface includes the main dashboard (account info, today's stats, open positions, daily P&L summary), an intraday P&L equity curve, live IB orders panel, today's closed positions, recent signals feed, and per-position TP/SL/Close action buttons. Settings tabs cover Trading (contracts, strategy, TP/SL), Safety (position limits, signal age, ODTE auto-close), IB Connection (mode, port, client ID), Interface (sounds, system tray, startup), Advanced (opt-in panels including the Manual Trade panel and Test Signal panel), and Account (subscription details, activation code).

Mobile Access mirrors the core dashboard on your iPhone — open positions with live P&L, edit TP/SL, close trades, today's signals, and the kill switch — all over the secure Tailscale tunnel set up in Section 12.

Thank you for using SignalTrader. Happy trading!

ASG SPX US Farms | www.asgspxusfarms.com